

model

Garden cart

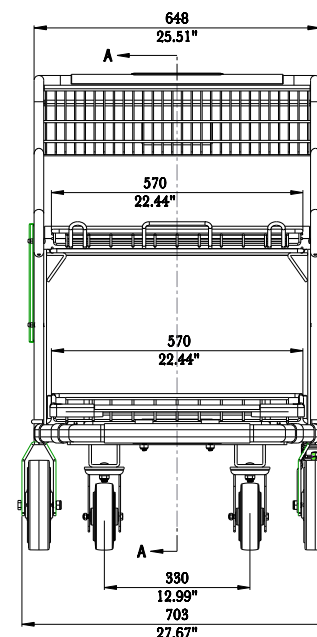
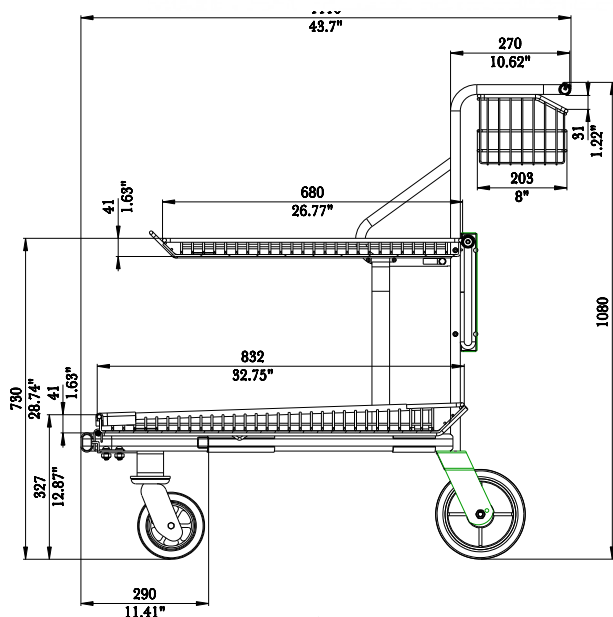
TOTAL CAPACITY	19,400 in ³	317 L
BASKET CAPACITY - UPPER		
BASKET CAPACITY - LOWER		
BASKET CAPACITY - REAR	1,040 in ³	17 L
LOWER TRAY CAPACITY	18,360 in ³	300 L
LOWER TRAY CAPACITY - REAR		
NESTING DISTANCE	11.41"	290 mm
WEIGHT	85 lbs	38.5 kg

STANDARD FEATURES	<ul style="list-style-type: none"> E-Coat + Grey Power Coat Finish Retractable Top Shelf Additional Rear Accessory Basket Bag Hooks 6" Front Swivel and 8" Rear Fixed PU Wheel (1) Rear Foot Brake Protective Bumper System 12" Nesting Distance Snap Down Handle (Artwork Optional)
-------------------	---

AVAILABLE FEATURES	<ul style="list-style-type: none"> Custom Colours Handle Artwork Deposit Device
--------------------	--



5181 Everest Drive Mississauga, Ontario L4W 2R2
1.888.473.3629 | www.instorecorp.com



This slide and its contents are proprietary and strictly confidential. By its acceptance hereof, the recipient agrees not to copy, distribute or otherwise disclose to any third parties this slide or any of its contents without the prior written consent of In-Store Products Limited.

*Dimensions (inches/mm)